



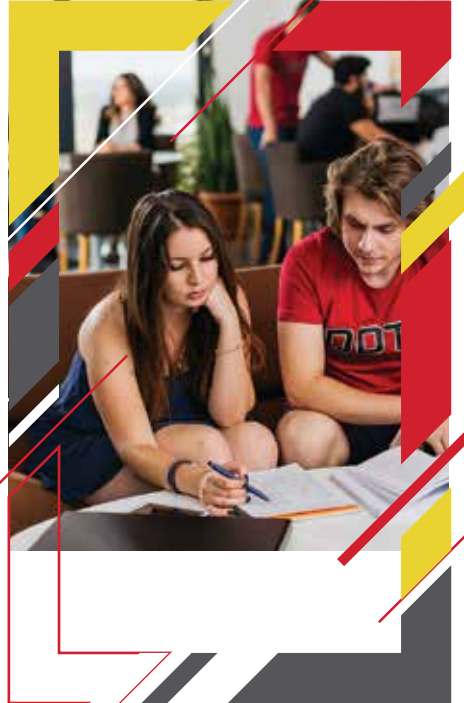
MIDDLE EAST TECHNICAL UNIVERSITY  
NORTHERN CYPRUS CAMPUS



**WE CAN  
CHANGE  
THE WORLD**

---

One of the world's most reputable universities,  
with a campus in Northern Cyprus...



# Our Students Testimonials



"Anything and everything that you learn in METU NCC will take you far in the future." **Lama Harb, Lebanon**



"The thing that inspired me to attend METU NCC is that I was having a conversation with a Turkish professor about the universities in Turkey and he said that I wish I had a CV with at least an hour of teaching at METU. For me it was like a dream come true studying here :)"  
**Amar Elbanna, Egypt**



" I took my first step to the future the day I joined METU NCC."  
**Ahmed Kues, Libya**



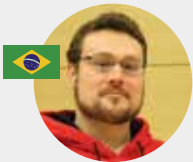
"After doing a tremendous amount of research, I chose METU NCC due to its reputation, value for degree, amazing accommodation and vibrant Students' Union."  
**Abeer Jazzar, Jordan**



"I love the community and environment of METU NCC, it's home away from home."  
**Sharmin Zaman, Bangladesh**



"In order to make your most important years of building yourself comfortable and interesting, you need to have a warm, colorful, peaceful and academically exciting atmosphere around you. METU NCC contains all of it plus amazing, open-minded people around you. Great opportunity to teach and to be taught!"  
**Anastasia Dolgoplova, Russia**



Academic excellence of one of the world's top 100 universities, international faculty, the campus of dreams, affordable tuition. Choosing METU NCC was the smartest decision of my life."  
**Vinicius F R de S e Silva, Brazil**



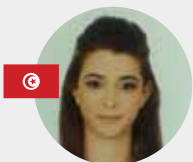
" METU NCC gives you a platform to achieve your goals in life and basically gives you that 'International-Learning experience'. From a highly qualified faculty to modern and well-furnished classrooms and dorms, METU NCC is definitely the place to be."  
**Derick Kabochiu, Kenya**



"A journey of thousand miles begins with a single step. METU NCC is the first step towards success . It is not only providing me with a quality education but also enlightening my path to become a successful engineer using societies like ASME."  
**Ahmed Zarrar, Pakistan**



"METU is ranked among the top 100 universities in the world and is a leading university in Turkey. Therefore, it provides a key to a bright academic future. Apart from high academic performance, you will experience very friendly international environment."  
**Kemran Karimov, Kazakhstan**



"METU is a place of light, liberty and learning"  
**Ines Mechkane, Tunisia**



## About METU

METU is more than a prestigious international university. It is a culture, a challenge, a freedom, even a phenomenon in Turkey. There are very few institutions in the world that have had an impact on their respective societies like METU has had on the Turkish society. Its establishment in 1956 represented a major transformation in the concept of higher education in Turkey, following the modern, research-based education model of Western institutions. Today, METU continues to attract the finest minds from Turkey and abroad, providing them with academic and intellectual training of the highest standards. For more than half a century, METU has infused the Turkish job market with more than a hundred thousand exceptionally qualified professionals. These professionals have carried with them the METU culture of research and innovation, excellence, challenge and responsibility – and they have had a profound impact.

The regional dimension has been at the heart of METU's mission since its establishment, with the selection of English as the medium of instruction being a clear demonstration of this mission. Today, one can find thousands of METU alumni in dozens of countries worldwide, especially in Eurasia and the Middle East.

## METU Northern Cyprus Campus (METU NCC)

Established in 2005, the Northern Cyprus Campus of METU is an extension of the main campus with an even more focused regional mission. Blending the strict academic standards of METU with the charm of Cyprus – a picturesque Mediterranean island – forms a unique combination that makes living the METU educational experience even more rewarding. METU NCC offers an exceptionally qualified international faculty and a carefully planned, award-winning campus equipped with cutting edge technology and the most modern facilities. Additionally, the campus offers exceptionally favorable student/faculty ratio as low as 12/1 and small classroom sizes. This allows students to form a close-knit community with the faculty members and administrators, and easy access to instructors promotes outside-the-class learning. Last but not least, all degrees are issued by our main campus in Ankara. In this way, the Northern Cyprus Campus conveys all the qualities and values of METU to a new physical environment in its goal of educating more international students.



## Location

Located approximately 50 km west of Lefkoşa (Nicosia), METU Northern Cyprus Campus is built on a magnificent hill with an area of 44 hectares (110 acres) commanding a beautiful view of the Trodos Mountain range to the south, the Mediterranean Sea to the west and a National park filled with ancient olive trees to the north. Also visible 6 km to the south is the quaint town of Güzelyurt (pop. 19,000), situated among fragrant citrus groves.

# Degree Programs

## Engineering

- Aerospace Engineering
- Chemical Engineering
- Civil Engineering
- Computer Engineering
- Electrical and Electronics Engineering
- Mechanical Engineering
- Petroleum and Natural Gas Engineering
- Industrial Engineering
- Software Engineering

## Economics and Administrative Sciences

- Business Administration
- Business Administration  
(Dual diploma program with SUNY New Paltz University, USA)
- Economics
- Political Science and International Relations

## Education and Humanities

- Guidance and Psychological Counseling
- Psychology
- Teaching English as a Foreign Language

## Graduate Programs

- Sustainable Environment and Energy Systems
- Computer Engineering
- Electrical & Electronics Engineering
- Mechanical Engineering

## Minor Programs

- Digital Electronics
- Data Science
- Information Systems
- Mechatronics
- Engineering Management
- Renewable Energy

- Water Resources
- Economics
- General Management
- Corporate Finance
- Political Science and International Relations
- General Psychology



# Admission Requirements



High school graduates and prospective students can apply to the degree programs relevant to their High School curriculum. METU NCC accepts all international exams (e.g. A level, SAT, IB, etc...). Moreover, the General Secondary Exam Certificate of many countries is also acceptable. Full information about the accepted exams and minimum grades/scores required for application can be found on our website:

<https://international.ncc.metu.edu.tr/en/admission-criteria-for-your-country>

## Application

Applying to METU NCC can be done conveniently online. Students complete an online application form, upload scanned copies of certificates, transcripts, etc... and a copy of the application fee bank receipt. The application process takes approximately 15 minutes. Originals and certified copies of all required documents must be submitted upon on-campus registration. Applications are accepted for both the Fall (commencing September) and the Spring (commencing February) semesters. The online application system as well as full information about the required documents can be accessed via our application homepage: <https://apply.ncc.metu.edu.tr/>

## Language Requirements

The medium of instruction at METU is English. Students must prove their competence in English language before they can begin their academic programs. Therefore, admitted students are required to take the English Proficiency Examination held on campus and score a passing grade to be able to register for first year courses. Students failing to score this minimum are required to enroll in the one-semester/one-year English Preparatory School. Students who have recent scores (not more than two-years old at the time of on-campus registration) accepted by METU NCC in any of the recognized international English Proficiency Examinations, such as the TOEFL, IELTS or Pearson PTE (see table below for minimum accepted scores) are exempt from taking the English Proficiency Exam and may enroll directly to their first year. Note: Higher score is required for the English Language Teaching Program (ELT).

	TOEFL IBT	IELTS (Overall Band)	METU EPE	Pearson (PTE Academic)
Minimum Score	75	6.0	60	55
Minimum Score (ELT)	86	7.0	70	65



## Annual Tuition and Fees

The annual tuition and other fees for the current Academic Year can be found on our website: <https://international.ncc.metu.edu.tr/en/tuition-scholarships>  
Note: These do not include housing or living expenses.

## Financial Support and Scholarship Opportunities

**Tuition Waiver Scholarship:** Awarded on admission, covers 25%, 50%, 75% or 100% of the tuition fee, to candidates with scores/grades considerably above the minimum requirements for application. Students can apply for a tuition waiver scholarship by filling in the general online application form. The evaluation decision made by the International Student Admission Committee is announced within 14 working days after the completed application is received.

For detailed information about tuition waiver scholarship opportunities, please visit: <https://international.ncc.metu.edu.tr/en/tuition-scholarships>



**Sibling Discount:** If you have a sibling joining you at METU NCC, one of the siblings (with lower scholarship) will pay the reduced tuition fee of \$6000 per academic year. Any further Tuition Waiver discount granted will be calculated taking this reduced fee as a base.

**Note:** Both siblings must be registered as regular students.

**Academic Success Merit Scholarship:** International students after completing a year of study with an exceptionally high CGPA (min. 3.5/4.0) compete for Merit Scholarship. This scholarship is awarded on a semester basis and amounts to 450TL-650TL (~\$200-\$300) per month.

## Visa

No visa is required to enter Northern Cyprus. However, depending upon your nationality, you may need a TRANSIT VISA for the Republic of Turkey. You can obtain a transit visa with your acceptance letter from the nearest Turkish Embassy/Consulate.

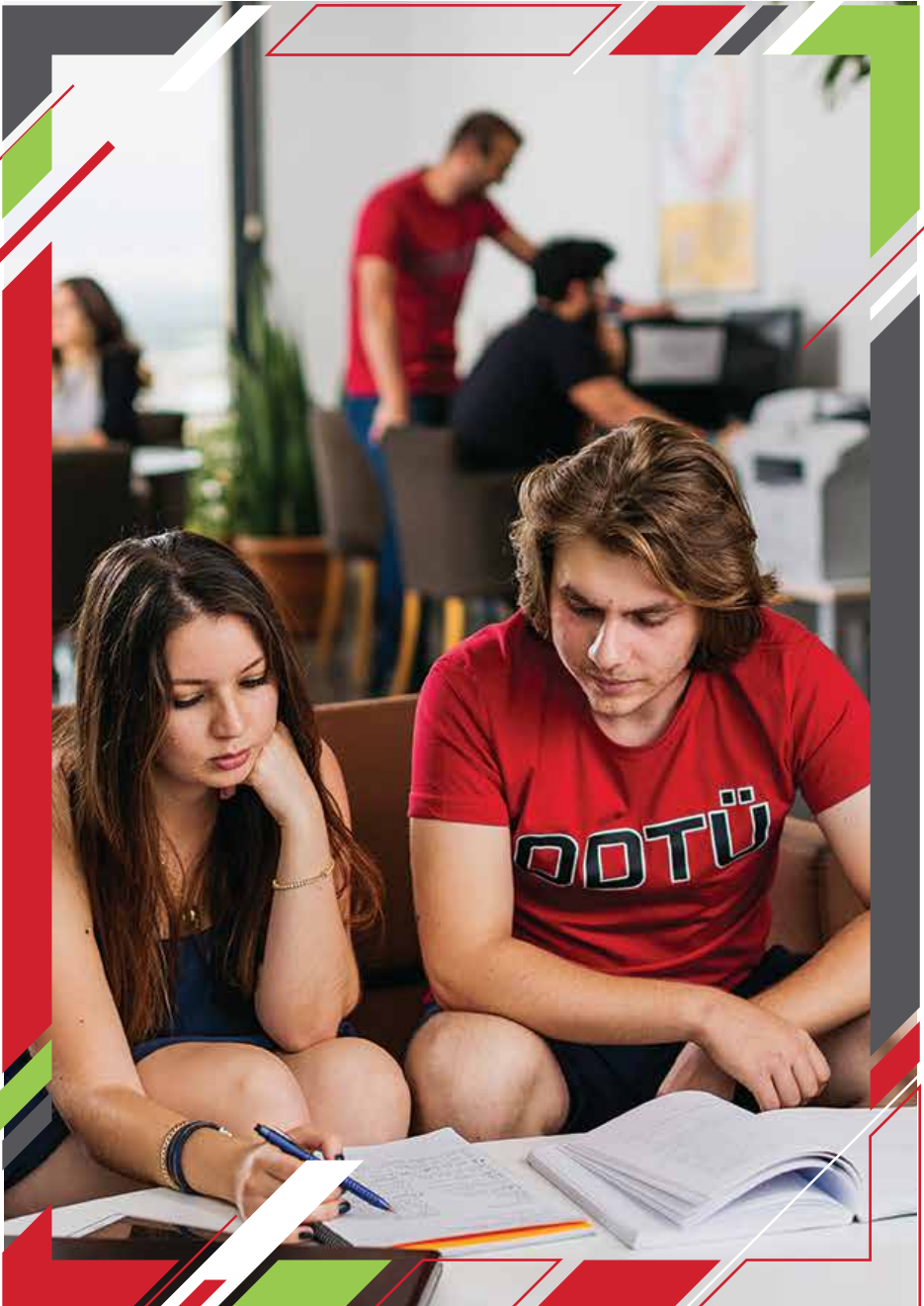


# Student Accommodation

Your experience as a student is not only determined by the quality of your courses and teachers, but also by where you live. 470 modern dorm rooms at METU NCC form an integral part of the campus life enriched with intellectual opportunities, exciting adventures, and lasting friendships. Accommodation is guaranteed for at least first 2 years to all international students in one of the four student dormitories on campus in order to allow them to have a smooth transition to their undergraduate studies. METU Northern Cyprus Campus dormitories are furnished with state of the art technology, offering students a safe, comfortable and well-kept environment. For detailed information, please visit:

<https://international.ncc.metu.edu.tr/en/dormitories>

Office of Dormitories  
Middle East Technical University Northern Cyprus Campus  
Kalkanli-Guzelyurt  
TRNC via Mersin 10 Turkey  
E-mail: [nccdorms@metu.edu.tr](mailto:nccdorms@metu.edu.tr)  
Tel : +90-392-6612600  
Fax: +90-392-6612609





# Types of Dormitories

## Dormitory I:

It has a capacity of 152 rooms and 496 students. Two or four students share a room which has a separate common study area and a bathroom. All rooms have AC and central heating, broadband internet connection, cable TV and individual telephone lines. In addition to a lobby, a TV room, a canteen, a laundry and ironing room which are available for common usage, there are common kitchens and study rooms in the three blocks, one of which is reserved for female students. Dormitory I is conveniently architected for the accommodation of the physically disabled.

### DORMITORY I. TWO-PERSON ROOM PLAN



### DORMITORY I. FOUR-PERSON ROOM PLAN



## Dormitory II:

It has a capacity of 140 rooms and 420 students. This building is designed to accommodate three students in a suite with individual bedrooms, a common study area, a kitchen and a bathroom. The building consists of two separate blocks, one for male and one for female students. All rooms have AC and central heating, broadband internet connection, cable TV and individual telephone lines. In addition to a lobby, a TV room, a canteen, a laundry and ironing room which are available for common usage, there are study rooms in the two blocks.

### DORMITORY II. THREE-PERSON ROOM PLAN



## Dormitory III:

It has a capacity of 175 rooms and 674 students. The rooms are designed to accommodate two or four students (2 double bedrooms). The WCs and bathrooms are available for common usage (app. 26-28 persons). In addition, there are study rooms on each floor. All rooms have AC and central heating, broadband internet connection, cable TV and individual telephone lines. In addition to a lobby, a TV room, a canteen, a laundry and ironing room which are available for common usage, there are shared kitchens.

### DORMITORY III. TWO-PERSON ROOM PLAN



## DORMITORY III. FOUR-PERSON ROOM PLAN



### EBI Student Dormitory:

It has the capacity of 35 rooms and 140 students. The rooms are designed to accommodate four students (2+2 suite rooms) with common study area, a kitchen and a bathroom within the room. The building is divided into four blocks, 2 blocks for male, 1 block for female students, and 1 block for common usage areas. All rooms have AC and central heating, broadband internet connection, cable TV and individual telephone lines. The lobby, TV room, computer room, study rooms, canteen, laundry and ironing room are shared.

### Dormitory IV / EBI-2 Dormitory:

It has the capacity of 65 rooms and 220 students. The rooms are designed to accommodate two (20 rooms) or four (45 rooms) students with a small kitchen, a WC and a bathroom within the room. All rooms have mezzanine floor for beds.

The building is divided into three blocks, 1 block for common usage areas (social building), 1 block for male and 1 block for female students. All rooms have central cooling and heating, 24hours hot tap water, broadband internet connection, cable TV and individual telephone lines. The lobby, TV room, two study rooms (one is silent), canteen, restaurant, laundry and ironing room are located in the social building.

	Dormitory I	Dormitory II	Dormitory III	EBI Dormitory	Dormitory IV EBI-2 Dormitory
Rooms	2- and 4-person rooms	3 students in a suite with individual bedrooms	2- and 4-person rooms	2+2 person rooms	2- and 4-person rooms
WC-Shower	Inside the room	Inside the room	Common usage	Inside the room	Inside the room (two separate places for WC and shower)
Kitchen	Common usage	Inside the room	Common usage	Inside the room	Common usage + small kitchen inside the room
Common Usage	TV room, canteen, laundry, ironing room, kitchens and study room	TV room, canteen, laundry, ironing room, kitchens and study room	TV room, canteen, laundry, ironing room, kitchens and study room	TV room, canteen	TV room, canteen, restaurant, laundry, ironing room, kitchens and study room



METU NCC is an excellent campus with its high-tech infrastructure, very modern education buildings and laboratories, and a broad array of facilities throughout the campus, including the Culture and Convention Center, Administration-Library-IT Center Complex, Cafeteria, Shopping Center, Student Association Rooms, Dormitories, Staff Housing options, Fitness-Wellness Club, Post Office, Bookstore, Health & Counseling Center, Sports Complex, and an outdoor swimming pool. The Student Associations and Student Activity Center, campus shopping area, Culture and Convention Center, cafeteria and canteens provide a full line of social, cultural and sports facilities to the students and staff.

## How do we help you settle in?

### Orientation Program

METU NCC runs a comprehensive orientation program for new students before the start of each academic semester. You will find out all you need to know about your academic study as well as practical information about life in the Turkish Republic of Northern Cyprus (TRNC).

Orientation is where you can learn about the University, ask questions, meet with an academic advisor, and get to know your fellow classmates. You will also have the chance to speak with representatives from administrative units, including housing and dining, and you will be informed of logistical details.

### GPC First Year on Campus Seminar

GPC 100 is a first-year student seminar designed to assist new students make a successful transition to the academic and social life of METU NCC and thereby foster a sense of belonging to the University. This course is taken during the first year of enrollment at METU NCC. The course will be delivered through a combination of group seminars/activities, small group reflection/discussion sessions, and group social and cultural activities.

### Student Happiness Center

METU NCC supports the interaction of all cultures and the social and cultural exchange between the local community and the international students. The Student Happiness Center plays an effective role in assisting foreign students to get accustomed to the Cypriot culture and the beautiful landscape of Cyprus. Appreciating the diversity that international students bring with them, the SHC serves as a beneficial platform for these students to plan and organize social and cultural activities such as international food festivals, traditional nights, folk dancing, karaoke nights, international essay writing competitions and more.



# Dining

There are 8 dining locations and food services at METU NCC with a range of hours from as early as 7:30 am to as late as 3:00 am. These 9 dining locations offer different tastes from various cuisines.

Mardo Cafe	Patisserie	Main Cafeteria (1. À la carte, 2. Table d'hôte)	I. Dormitory Cafe
School of Foreign Languages Canteen	II. Dormitory Cafe	III. Dormitory	Segafredo Cafe

Note: All meals are within \$2-\$4 price range.



## Health and Counseling Services & Health Insurance

METU NCC Health Service is committed to the concept of wellness. Our staff includes a full-time family practitioner, a general practitioner, a psychiatrist and 5 nurses. The campus has a medical center for the primary healthcare of students. Medico is open 24 hours a day. Turkish Republic of Northern Cyprus requires all international students to enroll in the Health Insurance System, which covers emergency treatment, clinical examination, as well as costs of hospitalization. The 120USD annual fee for this compulsory health insurance is to be paid prior to registration. At present, METU NCC Medico is providing primary care and urgent care to the university community from our new state-of-the-art health complex, in which preventive health care and counseling services are also available.

## Student Development and Counseling Center

This center is a support service department for students and it aims at helping students cope with academic, social and personal issues they might encounter during their lifetime and supporting their personal development. As you may know, the time you spend at university during which personal development gains speed, is a period when there arise various issues you need to deal with, like separation from your family, establishing close relationships, making healthy decisions and clarifying values you already possess. Our goal is to support you in this process in subject areas you need help with.

# Library, Bookstore and IT Resources

## Library

The Library commits to support METU NCC's course programs, meets the changing information needs of the students, faculty and staff, and collaborates in resource sharing projects with the national and international institutions. The Library has a collection of over 29.000 books, and the library users are able to access the METU (Ankara) Library's all electronic resources through the internet, which consist of more than 50.000 electronic journals and around 130.000 e-books through over 150 online databases on the campus. The book collection is organized according to the Library of Congress Classification System in that the general subjects are identified by a single letter of the alphabet, numbers identify subtitles, additional letters and numbers emphasize sub-groups. The book collection is organized on the shelves by this classification system, book number and publishing date. The print journals and newspapers are arranged in alphabetical order.



## Bookstore

In addition to selling new and used copies of required books, the Bookstore at METU NCC offers a wide selection of METU NCC gifts and clothing, bestsellers, periodicals, and dorm room accessories. Our mission is to serve the needs of our students through the effective delivery of quality books and other academic and collegiate retail services. Book stocks include a diverse front-list and backlist of titles, reflecting the wide range of academic, professional and the general book interests of the METU NCC community and area residents. The Bookstore attracts students, faculty, staff, visitors, area residents and professionals. You can also find stationery, gifts, cards and computer products in the Bookstore.

## IT Services

METU NCC students can access to the Internet in three ways. They can use the wired internet connection in their dorms, (one port for each student), or use their compatible mobile device to connect wireless network in the common areas. If they don't have a mobile device or computer, they can use IZ-07 general usage computer lab to access internet from 08:30 to 24:00.



# Students Societies

Student activities are executed by the 57 student/sport clubs and societies with various focus areas, such as arts, literature, theater, music, politics, environmental and recreational subjects.

- 1 A Capella Society
- 2 Animal Welfare Association METU NCC
- 3 Ataturk's Thought Club
- 4 AIChE METU NCC Student Branch Society
- 5 Aerospace Society
- 6 Career and Management Club
- 7 Change and Social Awareness Society
- 8 Cinema Club
- 9 Civil and Construction Society
- 10 Community Volunteers Club
- 11 ACM Society
- 12 Culture, Literature and Thought Club
- 13 Cyprus Culture Club
- 14 Economics and Finance Society
- 15 Energy Society
- 16 Fantastic Fiction Society
- 17 Fine Arts Club
- 18 Folklore Club
- 19 Humor Society
- 20 Institute of Electrical and Electronics Engineers (IEEE) Student Society
- 21 International Students Association
- 22 METU Go Society
- 23 Debate Club
- 24 METU NCC Kitchen Club
- 25 Mockup Club
- 26 Model United Nations Society
- 27 Music Club
- 28 Musical Club
- 29 Philosophy Society
- 30 Problem Solving Society
- 31 Psychology Club
- 32 Photography Club
- 33 Political Science and International Relations Society
- 34 Radio Society
- 35 Socialist Thought Club
- 36 Society of Guidance and Psychological Counseling
- 37 Society of Mechanical Engineering
- 38 Society of Modern Thought
- 39 Society of Petroleum Engineers
- 40 Stem Society
- 41 Theater Club
- 42 Turkic Languages and History Society
- 43 Turkish Classical Music Society
- 44 Turkish – German Communication Club
- 45 Women in Business Club
- 46 TEDx METU NCC Society
- 47 Astronomy Society

## Sport Societies

- 1 American Football
- 2 Climbing Society
- 3 Cricket Society
- 4 Dance Society
- 5 E-sport Society
- 6 Horse Riding Society
- 7 Mini Golf Society
- 8 Outdoor Recreation Sports Society
- 9 Search and Rescue Society
- 10 Sub-aqua Society



# Services

## Radio METU (Northern Cyprus Studios)

Radio METU NCS' building was completed in November 2008. Radio METU NCS is in the first dormitory basement and consists of a production and a guest studio. Radio METU NCC is a student-run organization and broadcasts on FM 103.1 as well as on-line: <http://radyoodtukibris.net/index-en.php> . All students, faculty, and staff associated with METU NCC are welcome to become participating members of Radio METU.

## Art Studio

The Art Studio was established by the Fine Arts Club in the spring of 2007 to provide METU NCC students with the opportunity to express their creativity and skills, and contribute to their social development.

The Art Studio allows participants to express themselves through art by using all kinds of visual materials in a workshop environment. They can develop their creativity, thinking with new and different materials to visualize their thoughts. You will be away from your anxieties, prejudices, and problems while you are working in the Art Studio. Besides, you will have the chance to express your thoughts through colors, and with clay say, "I'm here". Art, for a more beautiful world...



## Photo Studio

The Photography Club has designed their society room like a photo studio and has been offering various services for seven years on campus. Many types of equipments are used by the Photography Club in the photo studio. All members of association can use the studio under the supervision of an experienced member.

## Music Studio

The Music Studio was established for the students who are members of the Music Club. There are many types of equipments in the studio. It is located on the ground floor of the CCC. You need to apply to the Social and Cultural Affairs Office to use the studio.

## Society Rooms

The society rooms are located on the upper floor of the shopping center.

# Annual Social Events at METU NCC

## Career Planning Seminars

The Career Planning Seminars help seniors prepare for the job market through 2 day intensive seminars which answer their most frequently asked questions. Each seminar is packed with practical advice, tips for success, interview CV preparation and job search techniques, etc...

## Spring Festival

The traditional "Spring Festival" has been organized annually since 2006. The Spring Fest is an annual event showcasing the lighter side of higher education. This free event is a great opportunity for students of all ages to learn and have fun in three full days of hands-on activities. It is part education, part entertainment, and all fun!

## Theater Festival

The traditional "TiyatrODTÜ Theater Festival" has been organized annually since 2007. The goals of the TiyatrODTÜ Theater Festival are:

- To encourage, recognize, and celebrate the finest and most diverse works produced in university and college theater shows,
- To provide opportunities for participants to develop their theater skills and insight; and achieve professionalism,
- To encourage colleges and universities to give distinguished productions of new plays, especially those written by students; the classics, revitalized or newly conceived; and experimental works.

## International Cinema Days

The International Cinema Days are organized yearly by the METU Cinema Society. They offer different movies from different parts of the world.

## Environment Day

The Environment Day is a day that stimulates awareness of the environment and enhances public action. A clean and sustainable environment is a METU tradition. METU promotes and encourages the same tradition at METU NCC.





# Annual Social Events at METU NCC

## Traditional Tree Planting Festival

Nowadays, environmental problems that needs immediate attention worldwide have gained significant importance and METU fulfils its responsibility to create public awareness on the issue. With its Tree Planting Project, METU aims to create "a forest in the desert" at the Northern Cyprus Campus.

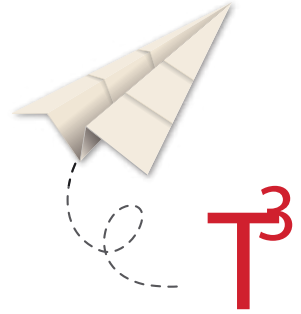
## International Food Festival

The International Students' Association proudly holds the annual International Food Festival, where one can find delicious food from many different countries, represented by the student body. The International Food Festival brings around 1000 people to METU NCC, including students from other universities in Northern Cyprus. It is a multi-cultural night and a feast that celebrates cultural diversity and ethnic culinary arts.

## Competitions:

### T3:

T3 (Think-Try-Transform) is an entrepreneurship program intended for METU students. It offers students the opportunity to turn their innovative ideas into value-added products. Through T3, students with innovative ideas will get mentoring support, while being given the opportunity to connect with prospective investors. We aim to enable students to convert their ideas into products even before graduation.



### Green Brain:

GREEN BRAIN OF THE YEAR is an international project contest designed to encourage high school and university students from across the world to come up with green ideas. The contest provides an opportunity for students to raise their awareness of sustainability, which is one of the biggest issues the world faces. Every year, the teams who go onto the finals are hosted by our campus and thus given a chance to get acquainted with Northern Cyprus as they are getting prepared for the final round. The contest has initiated and supported many sustainability projects.



## Kalkanlı Technology Valley (KALTEV)

Kalkanlı Technology Valley (KALTEV), which will be home to important projects and leading technology companies, is being put into practice in the 13th year of METU Northern Cyprus Campus. By putting this goal into action, the Campus is taking its success regarding academic development one step further. Located on the Northern Cyprus Campus of Middle East Technical University, ODTÜ KALTEV is a technology development zone that is open to researchers, students, entrepreneurs and industrial entities from across the world. The KALTEV facility along with its R&D Complex will be in service in September 2018.

With its research laboratories, pre incubation-incubation-entrepreneurship centers, technology transfer office and with the technology companies involved, ODTÜ KALTEV constitutes a remarkable innovation and R&D ecosystem. ODTÜ KALTEV, in which prominent technology companies from Turkey and all around the world have already expressed interest, is on the way to becoming a leading center of production and employment for the region.



ODTÜ KALTEV



ODTÜ KALTEV



ODTÜ KALTEV



ODTÜ KALTEV



# Sports & Fitness Facilities

## Indoor Multi Sports Complex

The Sports Center is architecturally of a very high standard and is fitted out with the latest technological equipment. All kinds of sports can be carried out in this excellent facility.

Multi-Purpose Sports Courts	3 Squash Courts	Table Tennis and Lounge	Aerobic, Dance and Exercise Studio
Self Defense Room	Fitness and Conditioning Room	Running - Room Walking Track	

## Outdoor Sports Facilities

Our outdoor facilities offer you a huge range of activities so you can be physically active, play sports and stay in shape while enjoying the beautiful weather of Cyprus.

Basketball / Volleyball Field	3 Tennis Courts	Artificial Turf Football Field	Open Air Swimming Pool	Climbing Wall (12 meters)
Beach Volleyball Field	Beach Handball / Soccer Field	Track & Field (200 meters)	Outdoor Fitness Area	Mini Golf Course (18 holes)



## Sports Clubs

Our sports clubs play an integral part in making METU NCC a lively campus and a vibrant institution. In this sense, these clubs help create the spirit of unity and togetherness among students and help them identify with the University.

Basketball • Volleyball • Swimming • Football Rugby • Table Tennis • Tennis Chess • Shotokan Karate

## Sports Teams

Sport Teams provide students with the opportunities for self-development by giving them a chance to perform to their full potential and achieve self-realization. With such performances students experience a sense of approval which in turn develops feelings of self-esteem, success and responsibility.

Men Basketball Team	Men Football Team	Men Futsal Team	Men Table Tennis Team	Men Tennis Team
Women Swimming Team	Men Swimming Team	Women Volleyball Team	Chess Team	



## When you join METU NCC, you will enjoy:

- A METU-standard education and training provided by exceptionally qualified international faculty
- A warm welcome from both the University administration and the student body
- A student-centered, sympathetic attitude by the University faculty and administration
- A friendly student body
- A very safe living environment
- A chance to benefit from the student exchange programs with other universities world-wide
- A world-wide recognized diploma







37

36

35

34

33

32

31

30

29

28

27

26

25

24

23

22

21

20

19

18

17

16

15

14

13

12

11

10

9

8

7

6

5

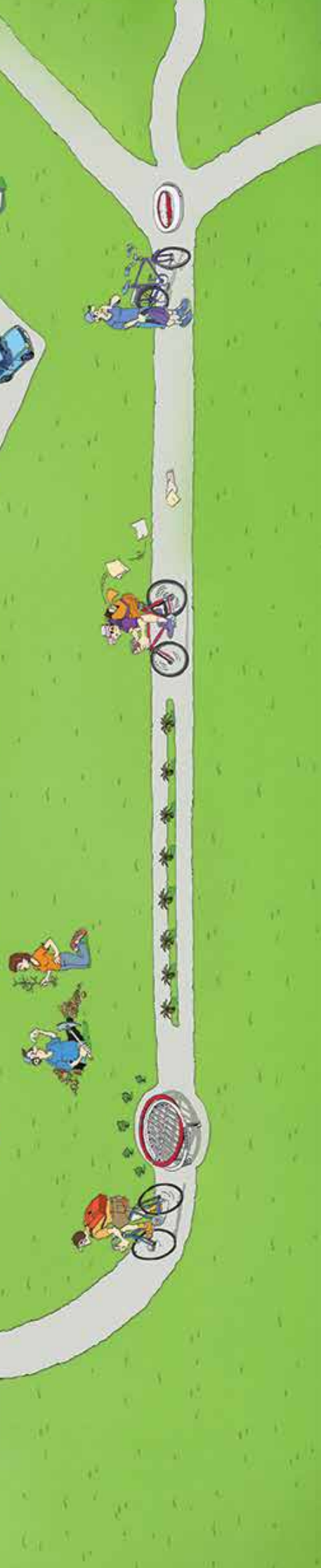
4

3

2

1





- |                                  |                                 |  |                                   |
|----------------------------------|---------------------------------|--|-----------------------------------|
| 1. Engineering Laboratories      | 11. Academic Hall – 3           | 21. Student Development and Counselling Center | 31. Science and Technology Center |
| 2. Culture and Convention Center | 12. Academic Hall – 1           | 22. Sports Center                              | 32. Dormitory 2A                  |
| 3. Administrative Building       | 13. Academic Hall – 2           | 23. Basketball Court                           | 33. Dormitory 2B                  |
| 4. Library                       | 14. School of Foreign Languages | 24. Tennis Courts                              | 34. Dormitory 3                   |
| 5. Art Workshop                  | 15. Cafeteria                   | 25. Climbing Wall                              | 35. Football Field                |
| 6. Residences                    | 16. Patisserie                  | 26. Swimming Pool                              | 36. Academic Hall – 4             |
| 7. Guest House                   | 17. Shopping Center             | 27. Fitness Field                              | 37. ODTÜ KALTEV                   |
| 8. Ebi Dormitory                 | 18. Dormitory 1                 | 28. Basketball Court                           |                                   |
| 9. Student Affairs               | 19. Mini Golf Course            | 29. Cinder Track                               |                                   |
| 10. Social and Cultural Affairs  | 20. Medico                      | 30. Beach Volley Court                         |                                   |





# MIDDLE EAST TECHNICAL UNIVERSITY

## NORTHERN CYPRUS CAMPUS

### Visit Our Website

You will find detailed information, photos, videos and a virtual tour of the Campus on our main website

[www.ncc.metu.edu.tr](http://www.ncc.metu.edu.tr) (English)

**Prospective students website:**

<http://international.ncc.metu.edu.tr/> (English)

<https://arabic.ncc.metu.edu.tr/> (Arabic)

**Online application website:**

<https://apply.ncc.metu.edu.tr/>

### Middle East Technical University Northern Cyprus Campus

Contact us :

We are available to respond to all your inquiries:

METU NCC Kalkanlı-Güzelyurt, Mersin 10 Turkey

Phone: +90 392 661 2104-10

E-mail: [ncc@metu.edu.tr](mailto:ncc@metu.edu.tr)



QR CODE



METUNorthCyprus



METUNCC



ODTUKİbris



odtukibris\_metuncc