



MIDDLE EAST TECHNICAL UNIVERSITY
NORTHERN CYPRUS CAMPUS



WE CAN
CHANGE
THE
WORLD



The prestige of a world class university, the charm of a Mediterranean island, the experience of a lifetime...

Our Students Testimonials



"Anything and everything that you learn in METU NCC will take you far in the future." **Lama Harb, Lebanon**



"The thing that inspired me to attend METU NCC is that I was having a conversation with a Turkish professor about the universities in Turkey and he said that I wish I had a CV with at least an hour of teaching at METU. For me it was like a dream come true studying here :)"
Amar Elbanna, Egypt



"I took my first step to the future the day I joined METU NCC."
Ahmed Kues, Libya



"After doing a tremendous amount of research, I chose METU NCC due to its reputation, value for degree, amazing accommodation and vibrant Students' Union."
Abeer Jazzar, Jordan



"I love the community and environment of METU NCC, it's home away from home." **Sharmin Zaman, Bangladesh**



"In order to make your most important years of building yourself comfortable and interesting, you need to have a warm, colorful, peaceful and academically exciting atmosphere around you. METU NCC contains all of it plus amazing, open-minded people around you. Great opportunity to teach and to be taught!"
Anastasia Dolgoplova, Russia



Academic excellence of one of the world's top 100 universities, international faculty, the campus of dreams, affordable tuition. Choosing METU NCC was the smartest decision of my life."
Vinicius F R de S e Silva, Brazil



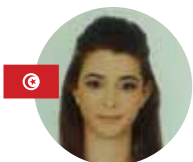
"METU NCC gives you a platform to achieve your goals in life and basically gives you that 'International-Learning experience'. From a highly qualified faculty to modern and well-furnished classrooms and dorms, METU NCC is definitely the place to be."
Derick Kabochiu, Kenya



"A journey of thousand miles begins with a single step. METU NCC is the first step towards success. It is not only providing me with a quality education but also enlightening my path to become a successful engineer using societies like ASME."
Ahmed Zarrar, Pakistan



"METU NCC gives you all opportunities to enhance your knowledge and prepare yourself for the future career"
Rustam Alashrafov, Azerbaijan



"METU is a place of light, liberty and learning"
Ines Mechkane, Tunisia

About METU:

METU is more than a prestigious international university. It is a culture, a challenge, a freedom, even a phenomenon in Turkey. There are very few institutions in the world that have had an impact on their respective societies like METU has had on the Turkish society. Its establishment in 1956 represented a major transformation in the concept of higher education in Turkey, following the modern, research-based education model of Western institutions. Today, METU continues to attract the finest minds from Turkey and abroad, providing them with academic and intellectual training of the highest standards. For more than half a century, METU has infused the Turkish job market with more than a hundred thousand exceptionally qualified professionals. These professionals have carried with them the METU culture of research and innovation, excellence, challenge and responsibility – and they have had a profound impact.

The regional dimension has been at the heart of METU's mission since its establishment, with the selection of English as the medium of instruction being a clear demonstration of this mission. Today, one can find thousands of METU alumni in dozens of countries worldwide, especially in Eurasia and in the Middle East.



METU Northern Cyprus Campus (METU NCC)

Established in 2005, the Northern Cyprus Campus of METU is an extension of the main campus with an even more focused regional mission. Blending the strict academic standards of METU with the charm of Cyprus – a picturesque Mediterranean island – forms a unique combination that makes living the METU educational experience even more rewarding. METU NCC offers an exceptionally qualified international faculty and a carefully planned, award-winning campus equipped with cutting edge technology and the most modern facilities. In this way, the Northern Cyprus Campus conveys all the qualities and values of METU to a new physical environment in its goal of educating more international students.

Degree Programs

Engineering

Aerospace Engineering
Chemical Engineering
Civil Engineering
Computer Engineering
Electrical and Electronics Engineering
Mechanical Engineering
Petroleum and Natural Gas Engineering

Economics and Administrative Sciences

Economics
Political Science and International Relations
Business Administration
Business Administration
(Dual diploma program with
SUNY New Paltz University, USA)

Education and Humanities

Guidance and Psychological Counseling
Psychology
Teaching English as a Foreign Language

Admission Requirements

Graduates of high school can apply to the degree programs relevant to their High School curriculum. METU NCC accepts all international exams (e.g. A level, SAT, IB, etc...). Moreover, the General Secondary Exam Certificate of many countries is also acceptable. Full information about the accepted exams and minimum grades/score required for application can be found on our website:

Graduate Programs

- Graduate Program in Sustainable Environment and Energy Systems
- Graduate Program in Political Science and International Relations
- Graduate Program in English Language Teaching
- Graduate Program in Computer Engineering
- Graduate Program in Electrical & Electronics Engineering
- Graduate Program in Mechanical Engineering

Minor Programs

- Economics
 - Electronics
 - General Management and Corporate Finance
 - Information Systems
 - Mechatronics
 - Political Science and International Relations
 - General Psychology
- Application is possible after 2 successive semesters in the program of study

<http://international.ncc.metu.edu.tr/admission-criteria-for-your-country>

Language Requirements

The medium of instruction at METU is English. Students must prove their competence in English language before they can begin their academic programs. Therefore, admitted students are required to take the English Proficiency Examination held on campus and score a passing grade to be able to register for the first year courses. Students failing to score this minimum are required to enroll in the one-semester/one-year English Preparatory School. Students who have recent scores (not more than two-years old at the time of on-campus registration) in any of the recognized international English Proficiency Examinations, such as TOEFL and IELTS are exempted from taking the English Proficiency Exam and may enroll directly to their first year. Note: Higher score is required for the English Language Teaching Program.

TOEFL IBT 75
IELTS (Overall Band) 6.0

METU EPE 60
Pearson(PTE) 55





Campus Life

The Campus

Located approximately 50 km west of Lefkoşa (Nicosia), METU Northern Cyprus Campus is built on a magnificent hill with an area of 137 hectares (339 acres) commanding a beautiful view of the Trodos Mountain range to the south, the Mediterranean Sea to the west and a national park filled with ancient olive trees to the north. Also visible 6 km to the south is the quaint town of Güzelyurt (pop. 19,000), situated among fragrant citrus groves. METU NCC offers exceptionally favorable student/instructor ratio as low as 13/1 and small classroom sizes. The students form a close-knit community with the faculty members and administrators, and easy access to instructors promotes outside-the-class learning. In addition to its state-of-the-art education and lab facilities, METU NCC, as an e-university, offers all the amenities of high-tech information services, such as digital library, widespread access to computing, high-speed internet and cable TV. The Student Activity Center with both indoor and outdoor facilities, Campus Shopping Area, Culture and Convention Center, cafeteria and canteens provide a pleasing range of social, cultural and sports facilities to the students and staff. Student activities are organized within more than 40 student clubs and societies which deal with various topics such as arts, literature, theater, music, politics, and environmental and recreational subjects.

Sports Facilities

Indoor Sports Complex Opportunities: Multi-purpose Sports Courts (Basketball, Volleyball, Handball), 3 Squash Courts, Table Tennis and Lounge, Aerobic, Dance and Exercise Studio, Martial Arts Room, Fitness Room (Free Weight, Fitness Machines, Cardio Machines), Running/Walking Track
Outdoor Sports Facilities: Basketball/Volleyball Court, 3 Tennis Courts, Artificial Turf Football Field, Outdoor Swimming Pool, Mini Golf Course, Beach Volleyball Court, Beach Handball Court, Running/Walking Track (200 meters), Outdoor Fitness Area, Climbing Wall (12,5 meters high)

Housing

Accommodation is guaranteed to all international students in one of the four student on-campus dormitories, at least for the first 2 years. Various room options are available; single, double and quadruple with an annual rate range of 1700USD to 3500USD (excluding VAT) depending on the room type. All rooms are air-conditioned, fully furnished and are connected to the campus broad-band internet. Full information about dormitories with detailed room plans can be found on the university website:

<http://international.ncc.metu.edu.tr/dormitories>

Students may also choose to reside in any of the numerous apartments available in the adjacent village of Kalkanlı (walking distant from the campus) or in the town of Güzelyurt. It is recommended, however, that students spend their first year in on-campus housing.

Dormitories	Dorm I	Dorm II	Dorm III	EBI Dorm	Dormitory IV / EBI-2 Dormitory
Rooms	2- and 4-person rooms	1 person rooms in a Suite of 3	2 and 4 person rooms	2 + 2 person rooms	2 and 4-person rooms
WC-Shower	Inside the room	Inside the room	Common usage	Inside the room	Inside the room (two separate places for WC and shower)
Kitchen	Common usage	Inside the room	Common usage	Inside the room	Common usage + small kitchen inside the room
Common Usage	TV room, canteen, laundry, ironing room, kitchen and study room	TV room, canteen, laundry, ironing room, kitchen and study room	TV room, canteen, laundry, ironing room, kitchen and study room	TV room and canteen	TV room, canteen, laundry, ironing room, kitchen and study room

METU is the evidence that a critical global mind can go along with the warmth of the Anatolian heart and spirit; METU NCC adds Mediterranean charm to this unique combination.

Visa

All flights to Northern Cyprus are connected via Turkey. Therefore, depending upon your nationality, you may need a TRANSIT VISA for the Republic of Turkey. You can obtain a transit visa with your acceptance letter, from the nearest Turkish Embassy. No additional visa is required to enter Northern Cyprus if you have a valid acceptance letter from the University, except for citizens of Pakistan, residing in Pakistan.



When you join METU NCC, you will enjoy:

- A METU-standard education and training provided by exceptionally qualified international faculty
- A warm welcome from both the university administration and the student body
- A student-centered, sympathetic attitude by the university faculty and administration
- A friendly student body
- A very safe living environment
- A chance to benefit from the student exchange programs with other universities world-wide
- A world-wide recognized diploma



Acceptable Examinations And Minimum Application Eligibility Scores

- **Indonesia:** A minimum score of 40 out of 60 in the Ujian Nasional (UN) Examination (New exam (SKHUN) Average 65, minimum 2 subjects related)
- **International A Levels:** A minimum of BBC in 3 A Levels, two of which shall be relevant to the program applied for. AS-level (Advanced Subsidiary Level) may be considered in lieu of a nonessential A-Level with relevant tariff points. Note: AS-Level subjects must be different from the A-Level subjects.
- **SAT 1:** A minimum total score of 1000 out of 1600 Evidence-Based Reading and Writing (Critical Reading in older version) exams, with a minimum "Math" score of 600 out of 800 for Engineering, Economics & Business Administration Programs.
- **International Baccalaureate (IB):** 28.

Engineering Pathway Semester

This program will offer the prospective students who do not meet the minimum admission requirements to METU NCC's engineering programs intensive courses in Mathematics, Physics and Chemistry to bring them to the level where they can start the freshman year. As such, this program is not an alternative to the freshman year, rather it is a preparatory program for it.

The duration of the program is one semester (16 weeks) and will run both in the fall and spring semesters. Students who successfully pass this program will be able to register for the Bsc. Program of their choice.

Minimum Admission Requirements For Pathway Semester

Internationally Available Examinations

SAT1: A minimum total SAT1 score of 950 out of 1600 in "Math" and Evidence-Based Reading and Writing (Critical Reading in older version) exams, with a minimum "Math" score of 400 out of 800

IB International Baccalaureate Certificate with a minimum total score of 26

International A Levels Qualifications Three A levels two of which relevant , with minimum grades CCD, OR 4 AS-level (Advanced Subsidiary Level) subjects with minimum CCCC. Two AS level subjects may be considered in lieu of an I A-level with relevant tariff points.

Indonesia: A minimum score of 36 out of 60 in the Ujian Nasional (UN) Examination (New exam (SKHUN) Average 60, minimum 2 subjects related)

Fees & Living Expenses:

Tuition fee: \$9000 per Academic Year (2019–2020)*. *5% VAT will be added
Engineering Pathway Semester tuition fee: The Engineering Pathway Semester will have a reduced tuition fee of \$3000 per semester.

Breakdown of Fees (Per Semester)

	No Scholarship	25% Scholarship	50% Scholarship	75% Scholarship	100% Scholarship
Registration Fee	105 USD	105 USD	105 USD	105 USD	105 USD
Tuition (5% VAT included)	4725 USD	3545 USD *	2365 USD *	1185 USD *	0
Dormitory Fee (5% VAT included)	945 USD **	945 USD **	945 USD **	945 USD **	945 USD **
Dormitory deposit (Refundable)	200 USD	200 USD	200 USD	200 USD	200 USD
TOTAL	5975 USD	4795 USD	3615 USD	2435 USD	1250 USD

*Fees are rounded

** 945 USD is taken as a base fee in Dorm I, Quad room

Dormitory fee per academic year:

Dorm	Room Type	Per Academic Year
Dorm III	Quad Room	\$1700*
Dorm I	Quad Room	\$1800*
Dorm III	Double Room	\$2700*
Dorm I	Double Room	\$3150*
Dorm II	Single Room in a Suite for 3	\$3450*

*5% VAT will be added Note: all fees are paid on a semester basis.

Living expenses: In addition to tuition and accommodation, students generally spend \$250-\$300 a month for living expenses such as food (\$150-\$200), transportation, stationery, books, etc... (\$100-\$150).

Scholarships

Tuition Fee Waiver Scholarship (25%, 50%, 75% & 100%)

Qualification	Min. Grade/Score for 25% Tuition Fee Waiver Scholarship	Min. Grade/Score for 50% Tuition Fee Waiver Scholarship
Surat Keterangan Hasil Ujian Nasional (SKHUN) Examination	A minimum score of 45 out of 60 in the Ujian Nasional (UN) Examination (New exam (SKHUN) Average 75, minimum 2 subjects related)	A minimum score of 53 out of 60 in the Ujian Nasional (UN) Examination (New exam (SKHUN) Average 85, minimum 2 subjects related)
International A Levels	BBB in 3 A Levels, two of which shall be relevant to the program applied for	ABB in 3 A Levels, two of which shall be relevant to the program applied for
SAT1	1050 (Math 620)	1160 (Math 670) for Engineering and Business, Economics; 1100-others
IB	30	32

Note: Exceptionally successful applicants have a chance of getting 75% or 100% tuition fee waiver; these scholarships are limited in number and thus very competitive.

Academic Success Merit Scholarship

Students with an extraordinary academic success are eligible for this scholarship. The amount of the scholarship is directly related with student's level of success (min. 3.5 out of 4.0) and is paid (approximately \$150-\$200 a month) throughout the academic year. Eligibility is possible after two successive semesters are completed by the student.



Sibling Discount:

One of the siblings (with lower scholarship) will pay the reduced tuition fee of \$6000 per academic year. Any further Tuition Waiver discount granted will be calculated taking this reduced fee as a base.



METU
Ankara Campus

METU
Northern Cyprus Campus



Documents Required For Application

- On-line filled application form:
<https://apply.ncc.metu.edu.tr>
- Copies of academic qualifications obtained
- Application fee payment receipt of \$55, paid online by credit card
<https://opay.ncc.metu.edu.tr/?lng=en>
or through Turkey IS Bank – Kalkanli, METU Branch 6822- 1875
IBAN: TR 8700 0640 0000 2682 2000 1875
Swift Code ISBKTRISXXX
- Passport copy
- Passport size photo (5x6cm) in JPG format
- TOEFL/IELTS report (if available)

Note:

All required documents mentioned above MUST be uploaded to the on-line application form.

